

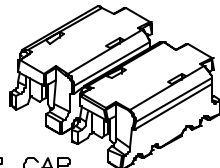
SPECIFICATIONS

APPLICATION SUPPORT LIST:

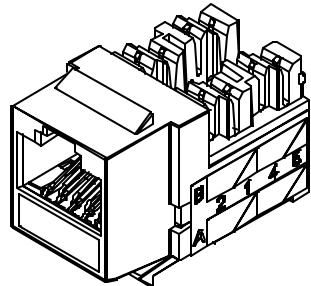
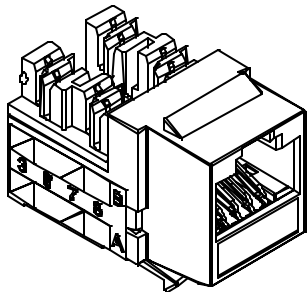
- VOICE
- 100 VG ANY LAN
- 155/622MBPS ATM
- 4/16 MBPS TOKEN RING
- 10 BASE-T ETHERNET
- 100 BZSE-TX FAST ETHERNET
- 1000 BASE-T GIGABIT ETHERNET
- BROADBAND VIDEO
- 270 MBPS DIGITAL VIDEO
- ALL OTHER APPLICATIONS DEVELOPED FOR OPERATION OVER CATEGORY 5e OR CLASS D CABLING.

FEATURES/MATERIALS:

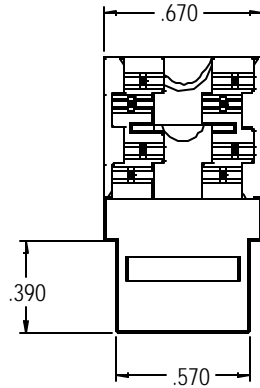
- PLASTIC HOUSING FLAME RETARDANT (UL 94 V-0).
- 11D STYLE IDC CONNECTORS - 100 MICRO-INCH TIN LEAD 60/40 PLATED OVER PHOSPHORUS BRONZE.
- IDC CONTACTS MEET DURABILITY REQUIREMENTS OF TIA 568-A WITH 22-26 AWG SOLID CONDUCTORS.
- CONTACTS - BERYLLIUM COPPER WITH A MINIMUM OF 50 MICRO-INCHES OF GOLD PLATING OVER NICKEL.
- UL LISTED.
- CSA CERTIFIED.



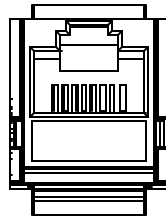
STUFFER CAP



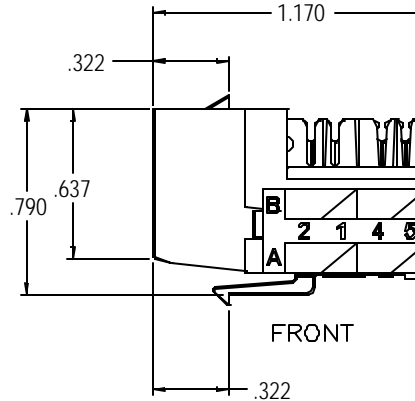
ISOMETRIC VIEW



TOP



LEFT SIDE



FRONT

REVISIONS					
REV	SHT	DESCRIPTION	DATE	ECN	CHECKED
A	ALL	RELEASE NEW	7/15/02	NEW	RBS

"XX" IN PART NUMBER DENOTES COLOR CODE:

- 00 ELEC. IVORY
- 01 OFFICE WHITE
- 02 BLACK
- 03 RED
- 04 GREEN
- 05 BLUE
- 06 GRAY
- 07 WHITE
- 08 ORANGE
- 09 YELLOW
- 10 PURPLE
- 11 BROWN

KMJA5EXX	JACK, KMJ, CAT5E, "COLOR"
SMP PART NO.	DESCRIPTION

UNCONTROLLED COPY

UNLESS OTHERWISE SPECIFIED DIMENSIONS ARE IN INCHES
 TOLERANCES:
 FRACTIONS ±1/32"
 ANGLES ±1/2°
 3 PLACE DECIMALS ±.005"
 2 PLACE DECIMALS ±.01"

THIS DRAWING AND THE DESIGN SHOWN ARE THE PROPERTY OF SUPERIOR MODULAR PRODUCTS INC. AND MAY NOT BE USED AS THE BASIS FOR MANUFACTURE OR SALE WITHOUT SPECIFIC WRITTEN PERMISSION OF SUPERIOR MODULAR PRODUCTS.



THIRD ANGLE PROJECTION	
CRITICAL DIMENSION CODE	
(F) - FUNCTION	
(M) - MATING	
(A) - AUDIT	

MATERIAL	SEE NOTES
FINISH	SEE NOTES

DRAWN BY	D.A.HOLBERT	DATE	7/15/02
CHECKED BY	R.B.SMITH	DATE	7/17/02
ENGINEER	J.YANIK	DATE	7/15/02
APPROVED	S.VAUGHN	DATE	7/17/02
PREVIOUS DWG			
NEXT DWG			
FILENAME	C105501A.DWG		

DWC TITLE		KMJ JACK, CATEGORY 5e	
SIZE	A	DWC NO.	C105501
REV	A	SCALE	NONE
SHEET		1 OF 1	