



PCMCIA & USB 5-in-1 Memory Card Adapter Installation

Windows XP/Me/2000

If you use Windows XP/Me or 2000, then installing the 5-in-1 Memory Card Adapter is simply a matter of plugging the card into a PCMCIA slot or connecting to an available USB port.

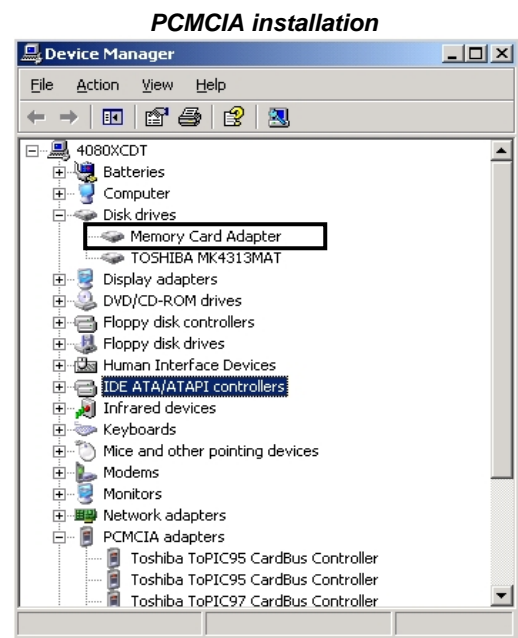
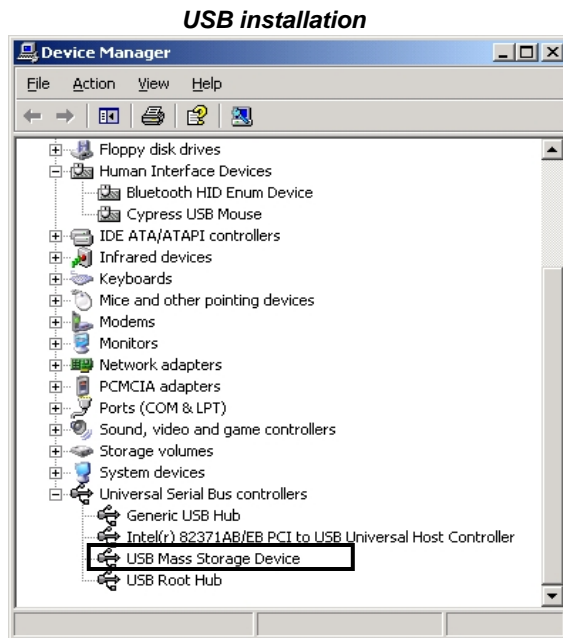
The card will be automatically detected by the operating system and the software automatically installed. There is no need to use the supplied CD; all the required drivers are already installed in Windows.

When you first install the Memory Card Adapter using either the PCMCIA or USB bus, Windows will automatically begin installing the relevant drivers and display a message on the task bar to indicate this

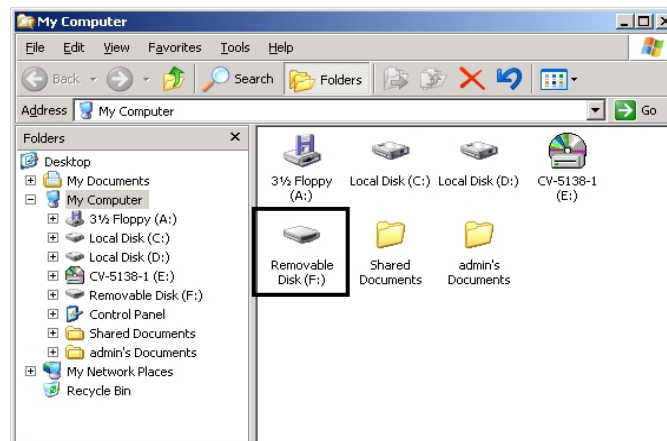


You can confirm correct installation of the device by checking Windows Device Manager –

Select: **Start → Control Panel → System** and click on the **Hardware** tab. Click **Device Manager** and check for the entries outlined below.



When installed the inserted memory card will appear as a **Removable Disk**:



Windows 98SE

For installation under Windows 98SE you must install the software on the supplied CD **BEFORE** connecting the Memory Card Adapter.

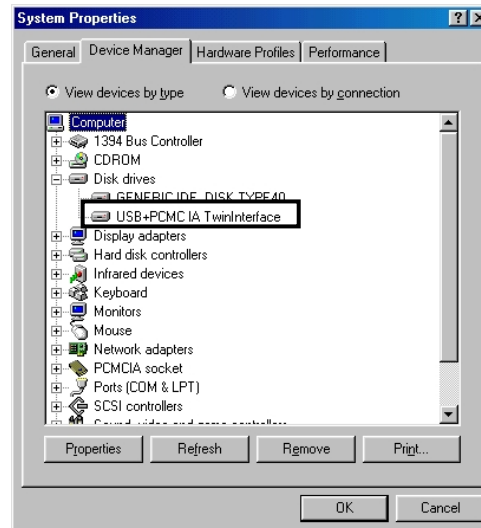
1. Insert the driver CD into your CD Rom drive and open the folder named **5 IN 1 Adapter+USB Reader**.
2. Within the folder click **Install**.
3. The installation window will appear. Click on **Device Driver Setup Application**
4. The **Install Shield Wizard** will launch. Follow the on-screen instructions until installation is complete.
5. When the installation is complete, click on **Exit** to close the installation window.

Once the software has been installed you can plug the Memory Card Adapter into your computer.

USB connection

Before you begin, ensure a memory card is inserted into the Memory Card Adapter. The first time you connect the Memory Card Adapter via USB, Windows will detect and install the correct drivers. To confirm correct installation, check Device Manager -

Select: **Start → Control Panel → System** and click on the **Device Manager** tab. Check the entry in the **Disk drives** section. You should see an entry for the **USB+PCMCIA TwinInterface**.



In Windows Explorer the inserted memory card will show up as a **Removable Disk**:



PCMCIA connection

Before you begin, ensure a memory card is inserted into the Memory Card Adapter. The first time you install the Memory Card Adapter into the PCMCIA slot, Windows will detect and begin installing the correct drivers as below:

1. The Add New Hardware Wizard will begin, click **Next** to proceed.



2. Select **Search for the best driver for your device** and click **Next**.



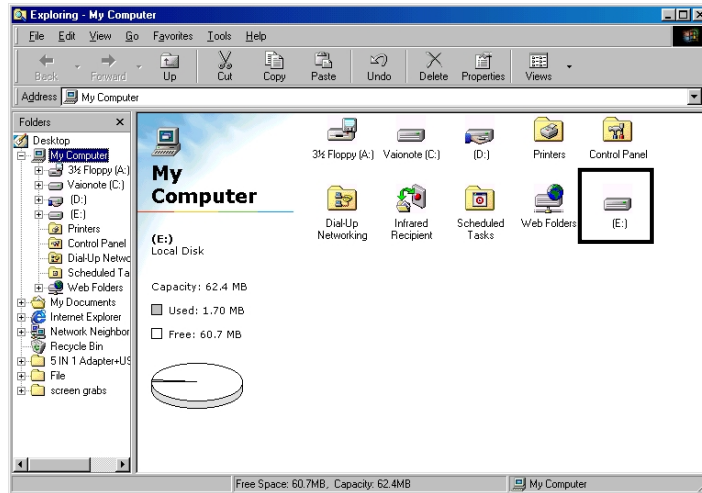
3. When Windows finds the updated driver, click **Next**.



4. Windows is now ready to install the driver. Click **Next**.



- You can confirm correct installation by opening Windows Explorer. You will see a new drive icon which represents the inserted memory card.

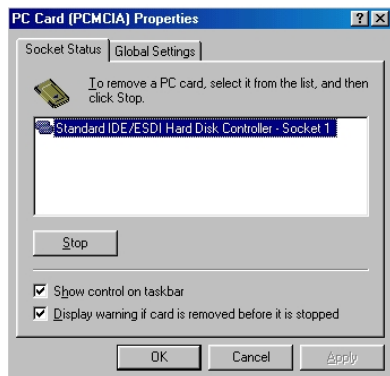


Important note: When using Win 98SE/Me/2000, you should always stop the PC Card before removing either the memory card or the memory card adapter. To do this, follow the instructions below.

- On the Windows Task Bar double-click on the PC Card icon -
- Highlight the card from the list and click **Stop**

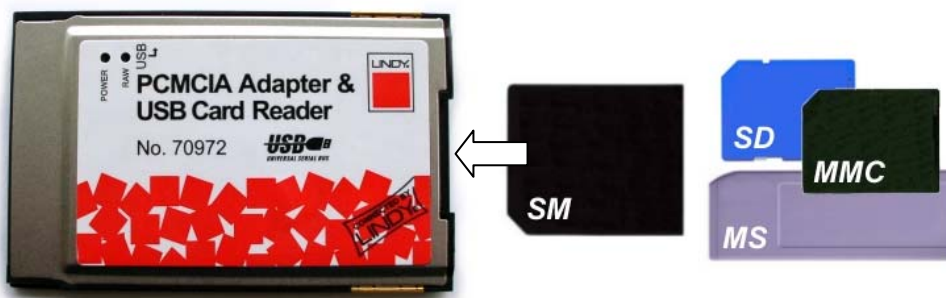


- Click **OK**. You can now safely remove the card!



Installing Memory Cards

See the illustration below for the correct way to insert each memory card type into the adapter.



LINDY No. 70972

www.lindy.com